

MAGNASELECT® SELECTOR SWITCH GENERATORS



MAGNASELECT®



The ideal solution for all your temporary power generation needs.

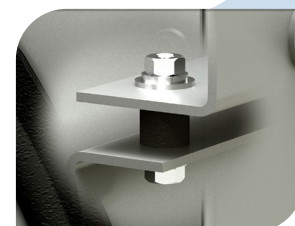
Available in 20 – 400kW, 480V/240V/240V 1 Phase, 60Hz ratings

Ruggedly built and quipped with pre-mounted and wired voltage selector switches, the Marathon MagnaSelect® generator offer powerful performance to meet the needs of the portable power generator market.

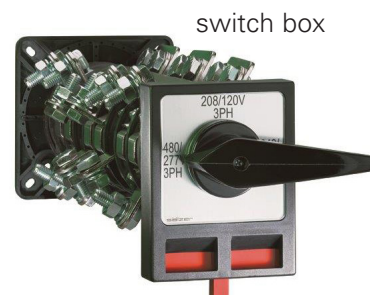
Three-position voltage selector switches provide flexible power options making it the ideal solution for:

- Rental generator market
- Site specific "push button power"
- Oil & gas (land & sea based)
- Construction
- Temporary power generation
- Entertainment industry
- Mining
- Disaster recovery

Vibration-isolated conduit boxes are gasketed for environmental protection.



Standard switch location is in left hand side position. Optional rightside position is available.



switch box

Flexibility.

Your power requirements change from job. With MagnaSelect, you can be ready.



MAGNASELECT® SELECTOR SWITCH GENERATORS

The MAGNASELECT line features rotary cam switches with solid metal shafts for durable, trouble-free service.

- Pre-mounted selector switches save installation time and costs.
- A Marathon exclusive for enhanced reliability, all switches are mounted in vibration isolated conduit boxes.
- Silver-plated contacts and the high-tension springs inside the switch guarantee solid connections under rugged conditions.
- Generator output terminals are arranged on the switch for ease of connection to your distribution system. All switches are UL®, CE® and UL-Canada rated.
- For added jobsite safety, lockouts are included on all models.
- Generators are extensively tested at all voltages in our end of line testing to assure proper performance and connections.

Ruggedly constructed with solid state technology, the SE350E voltage regulator, included as standard equipment, provides 1% voltage regulation and offers commercial features such as under speed protection and stability adjustment.

MAGNASELECT designs offer an optional, field mountable, permanent magnet generator coupled with our PM500 or DVR®2400 voltage regulators. These configurations provide superior motor starting capability and support the most demanding installations including loads that produce harmonic distortion as well as those requiring fault current support.

Constructed for extended life with exclusive “unirotor” construction, UL1446 Recognized Class H insulation, and long life bearings. MAGNASELECT designs are the ideal general purpose generators for both emergency and prime power needs.

SE350E



DVR®2400



PM500



marathon®
Generators

Reliable power ... *for the long run*

Industrial Solutions Regal Rexnord

100 East Randolph Street
Wausau, WI 54402-8003
Phone: 715-675-3359
Fax: 715-675-8026
www.regalrexnord.com

The proper selection and application of products and components, including assuring that the product is safe for its intended use, are the responsibility of the customer. To view our Application Considerations, please visit <https://www.regalrexnord.com/Application-Considerations>

To view our Standard Terms and Conditions of Sale, please visit <https://www.regalrexnord.com/Terms-and-Conditions-of-Sale> (which may redirect to other website locations based on product family).

The following trademarks are not owned by or under the control of Regal Rexnord Corporation: CE is a trademark or tradename of European Unions; UL is a trademark or trade name of Underwriters Laboratories.

“Regal Rexnord” is not indicative of legal entity.

Regal, DVR, MagnaSelect and Marathon are trademarks and/or tradenames of Regal Rexnord Corporation or one of its affiliated companies. ©2022 Regal Rexnord Corporation. All Rights Reserved.

MCSSP22047E • Form # SB0303E

RegalRexnord™