



# MARINER<sup>®</sup> GENERATORS

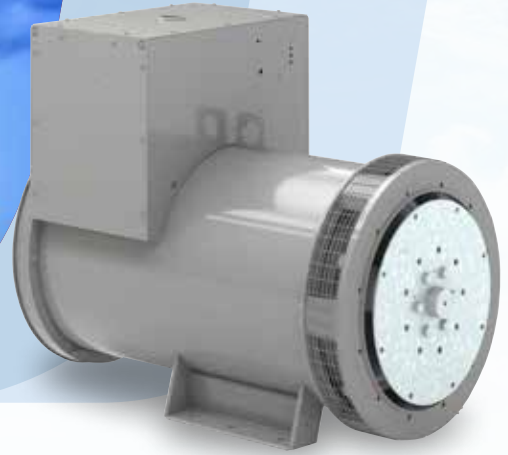
DEPENDABLE POWER FOR THE HARSHTEST MARINE  
APPLICATIONS 10KW TO 800KW, 60HZ AND 50HZ

NOVEMBER 2022



**MARINER<sup>®</sup>**

**RegalRexnord**<sup>™</sup>



## Marathon® Generators deliver the long life and reliability that harsh marine applications demand.

Life at sea is harsh, especially for electrical equipment. The constant exposure to humidity and corrosive salt water can cause premature failure to a ship's generator.

Unlike typical industrial generators, Marine generators is engineered for corrosion resistance, high durability and rugged performance in even the harshest of conditions.

For more than 60 years, the Marathon brand has been synonymous with reliable power generation. Our extensive line of marine generators are built for rugged durability and engineered to meet your application needs.

Investing in a high-quality marine-specific generator will help ensure dependability, reduced maintenance expenses, and longer service life.

## Applications

**Commercial fishing vessels**

**Drilling Platforms**

**Cruisers and tankers**

**Supply Vessels**

**Car and train ferries**

**Yachts**

### Environmental Protection

- Winding treated with multiple dip and bake cycles of 100% solids varnish
- Reinforced main stator windings
- Taped and encapsulated exciter stator
- Anti-tracking coated exciter stator

### Unirotor Construction



- Marathon's Unirotor single-piece laminations and wet-layer winding processes provide the most reliable rotor construction on the market

### Electrical Protection

- Equipped with robust rectifier assemblies to eliminate damage from voltage surges, paralleling, large motor-starting or non-linear loads
- Hermetically sealed diodes are rated to exceed 300% of design requirement
- Selenium surge suppressors handle up to 40x more power than Metal Oxide Varistor (MOV) suppressor



# Mariner® Heavy Duty

| Features                           | Mariner |
|------------------------------------|---------|
| Harsh duty excite stator           | ✓       |
| Surge suppressor                   | ✓       |
| Reinforced main stator             | ✓       |
| Upsized diodes                     | ✓       |
| Multiple varnish dip & bake cycles | ✓       |



## Superior Voltage Regulation

Some applications demand finely controlled voltage regulation. For these applications, Marathon offers advanced regulator options with PMG excitation.



### DVR®2400

- 0.25% voltage regulation
- Isolated PMG power supply assures reliable voltage output, independent of load
- Enables maximum motor starting capacity
- Full suite of protective features for extended service life



### SE350E

- 1.00% voltage regulation
- Simple connections and setup
- 240V, single-phase sensing
- Shunt-powered, half-wave 240V power supply
- Remote voltage adjust rheostat available

## Marine Agency Certified Generators

- Marine Agency certification for ABS®\* / Lloyd's Register®\* / DNV GL®\* for generators up to 2100kW
- NEMA®\* Class H non-hygroscopic insulation systems
- Include drip covers, space heaters & PMG support systems as required
- Units are built to agency requirements for (agency/witness) testing



Based on 100 KW, 45 C ambient, 110 C temperature rise

|   | American Bureau Of Shipping (ABS)   | Lloyd's Register                     | DNV GL                                  |
|---|-------------------------------------|--------------------------------------|---|
| Embedded Temperature Detectors                                  | Required for all units 1kV and over | Required for propulsion systems only | Required for all units 1000 kW and over |
| Space Heaters   | Required                            | Not Specified                        | Required                                |
| Sustain Short Circuit Current in Percent (%) Rated F.L. Current | 300% for 2 Sec.                     | 300% for 2 Sec.                      | 300% for 2 Sec.                         |
| Drip Cover or Minimum Enclosure Required                        | IP22                                | IP23                                 | IP23                                    |
| Fixed Termination of Load Leads                                 | Not Specified                       | Required                             | Required                                |
| Shaft Material Test   | Propulsion Only                     | Required                             | Required                                |

\*The following trademarks are not owned by, or under the control of Regal Rexnord Corporation: NEMA is a trademark or tradename of National Electrical Manufacturers Association; ABS is a trademark or tradename of ABS Group; Lloyd's Register is a trademark or tradename of Lloyd's Register Group Limited; DNV GL is a trademark or tradename of Det Norske Veritas group.

# 60 Hertz



| Base Model  | Net Wt. (lbs.) | No. of Leads | Standard Regulator | PMG Available | NEMA®* Class F                       |      |      | NEMA Class H                             |      |      |
|-------------|----------------|--------------|--------------------|---------------|--------------------------------------|------|------|--|------|------|
|             |                |              |                    |               | kW Ratings @ 95°C R/R over 50°C Amb. |      |      | kW Ratings @ 110°C R/R over 45°C Ambient |      |      |
|             |                |              |                    |               | 208Y - 240D                          | 450Y | 480Y | 208Y - 240D                              | 450Y | 480Y |
| 282PSL28043 | 295            | 12           | SE350E             | Yes           | 17.5                                 | 17.5 | 17.5 | 20                                       | 20   | 20   |
| 283PSL28045 | 366            | 12           | SE350E             | Yes           | 25                                   | 25   | 26   | 28                                       | 29   | 30   |
| 284PSL28047 | 436            | 12           | SE350E             | Yes           | 33                                   | 33   | 33   | 36                                       | 36   | 36   |
| 285PSL28048 | 480            | 12           | SE350E             | Yes           | 37                                   | 38   | 40   | 36                                       | 37   | 38   |
| 361PSL3120  | 518            | 12           | SE350E             | Yes           | 37                                   | 40   | 41   | 40                                       | 42   | 45   |
| 361PSL3121  | 569            | 12           | SE350E             | Yes           | 46                                   | 48   | 50   | 50                                       | 53   | 55   |
| 361PSL3122  | 620            | 12           | SE350E             | Yes           | 55                                   | 58   | 60   | 60                                       | 63   | 65   |
| 362PSL3124  | 706            | 12           | SE350E             | Yes           | 67                                   | 70   | 77   | 72                                       | 76   | 84   |
| 362PSL3126  | 796            | 12           | SE350E             | Yes           | 82                                   | 83   | 83   | 90                                       | 92   | 96   |
| 363PSL3127  | 943            | 12           | SE350E             | Yes           | 105                                  | 110  | 115  | 110                                      | 115  | 125  |
| 431PSL6252  | 1220           | 12           | SE350E             | Yes           | 133                                  | 135  | 135  | 140                                      | 143  | 142  |
| 431PSL6254  | 1310           | 12           | SE350E             | Yes           | 156                                  | 160  | 160  | 165                                      | 167  | 170  |
| 431PSL6256  | 1415           | 12           | SE350E             | Yes           | 183                                  | 190  | 186  | 191                                      | 200  | 200  |
| 431PSL6258  | 1455           | 12           | SE350E             | Yes           | 195                                  | 198  | 200  | 203                                      | 210  | 211  |
| 432PSL6260  | 1685           | 12           | SE350E             | Yes           | 245                                  | 245  | 245  | 260                                      | 261  | 260  |
| 432PSL6262  | 1760           | 12           | SE350E             | Yes           | 245                                  | 255  | 260  | 260                                      | 266  | 275  |
| 433PSL6266  | 2235           | 12           | SE350E             | Yes           | 325                                  | 325  | 321  | 343                                      | 348  | 342  |
| 433PSL6270  | 2245           | 12           | SE350E             | Yes           | 345                                  | 355  | 352  | 362                                      | 375  | 375  |
| 572RSL6325  | 2730           | 12           | DVR2400            | Std           | 400                                  | 430  | 430  | 435                                      | 462  | 450  |
| 572RSL6327  | 2840           | 12           | DVR2400            | Std           | 415                                  | 440  | 475  | 445                                      | 470  | 500  |
| 572RSL6329  | 3050           | 12           | DVR2400            | Std           | 470                                  | 505  | 505  | 510                                      | 547  | 535  |
| 572RSL6331  | 3110           | 12           | DVR2400            | Std           | 470                                  | 500  | 515  | 525                                      | 557  | 575  |
| 573RSL6333  | 3400           | 12           | DVR2400            | Std           | 610                                  | 645  | 645  | 650                                      | 690  | 680  |
| 573RSL6335  | 3620           | 12           | DVR2400            | Std           | 625                                  | 652  | 670  | 680                                      | 725  | 710  |
| 574RSL6337  | 4080           | 12           | DVR2400            | Std           | 655                                  | 690  | 700  | 725                                      | 770  | 800  |

# 50 Hertz



| Base Model  | Net Wt. (kgs.) | No. of Leads | Standard Regulator | PMG Available | NEMA Class F                             |      |      | NEMA Class H                              |      |      |
|-------------|----------------|--------------|--------------------|---------------|--|------|------|---|------|------|
|             |                |              |                    |               | kVA Ratings @ 95°C R/R over 50°C Ambient |      |      | kVA Ratings @ 110°C R/R over 45°C Ambient |      |      |
|             |                |              |                    |               | 220Y                                     | 380Y | 400Y | 220Y                                      | 380Y | 400Y |
| 282PSL28043 | 134            | 12           | SE350E             | Yes           | 12                                       | 16.9 | 15.6 | 13.5                                      | 19.8 | 18.5 |
| 283PSL28045 | 166            | 12           | SE350E             | Yes           | 20                                       | 23   | 23   | 23  | 28   | 28   |
| 284PSL28047 | 198            | 12           | SE350E             | Yes           | 25                                       | 31   | 30   | 29  | 37   | 35   |
| 285PSL28048 | 218            | 12           | SE350E             | Yes           | 30                                       | 32   | 37   | 43  | 36   | 41   |
| 361PSL3120  | 234            | 12           | SE350E             | Yes           | 38                                       | 40   | 41   | 40  | 44   | 45   |
| 361PSL3121  | 258            | 12           | SE350E             | Yes           | 43                                       | 50   | 50   | 45  | 53   | 52   |
| 361PSL3122  | 281            | 12           | SE350E             | Yes           | 45                                       | 60   | 56   | 51  | 65   | 62   |
| 362PSL3124  | 320            | 12           | SE350E             | Yes           | 65                                       | 75   | 73   | 75  | 80   | 81   |
| 362PSL3126  | 361            | 12           | SE350E             | Yes           | 73                                       | 82   | 81   | 81  | 94   | 94   |
| 363PSL3127  | 427            | 12           | SE350E             | Yes           | 90                                       | 100  | 100  | 101                                       | 113  | 113  |
| 431PSL6252  | 553            | 12           | SE350E             | Yes           | 121                                      | 140  | 135  | 130                                       | 143  | 141  |
| 431PSL6254  | 594            | 12           | SE350E             | Yes           | 143                                      | 160  | 160  | 151                                       | 166  | 165  |
| 431PSL6256  | 641            | 12           | SE350E             | Yes           | 150                                      | 186  | 183  | 161                                       | 200  | 193  |
| 431PSL6258  | 659            | 12           | SE350E             | Yes           | 183                                      | 200  | 200  | 195                                       | 210  | 210  |
| 432PSL6260  | 764            | 12           | SE350E             | Yes           | 191                                      | 235  | 240  | 210                                       | 256  | 251  |
| 432PSL6262  | 798            | 12           | SE350E             | Yes           | 245                                      | 256  | 256  | 260                                       | 270  | 271  |
| 433PSL6266  | 1013           | 12           | SE350E             | Yes           | 241                                      | 325  | 310  | 265                                       | 245  | 331  |
| 433PSL6270  | 1018           | 12           | SE350E             | Yes           | 285                                      | 355  | 350  | 310                                       | 375  | 368  |
| 572RSL6325  | 1239           | 12           | DVR2400            | Std           | 306                                      | 438  | 425  | 331                                       | 469  | 450  |
| 572RSL6327  | 1289           | 12           | DVR2400            | Std           | 356                                      | 450  | 463  | 363                                       | 475  | 494  |
| 572RSL6329  | 1384           | 12           | DVR2400            | Std           | 331                                      | 506  | 506  | 381                                       | 550  | 531  |
| 572RSL6331  | 1411           | 12           | DVR2400            | Std           | 431                                      | 513  | 525  | 469                                       | 563  | 563  |
| 573RSL6333  | 1543           | 12           | DVR2400            | Std           | 519                                      | 669  | 656  | 556                                       | 700  | 688  |
| 573RSL6335  | 1642           | 12           | DVR2400            | Std           | 469                                      | 663  | 669  | 513                                       | 738  | 706  |
| 574RSL6337  | 1851           | 12           | DVR2400            | Std           | 519                                      | 700  | 725  | 569                                       | 769  | 794  |

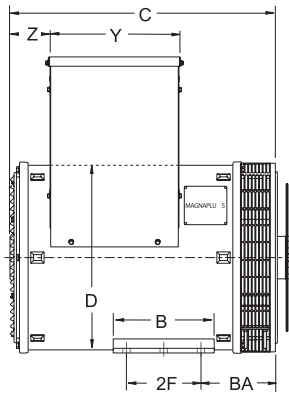
\*NEMA is a trademark or tradename of National Electrical Manufacturers Association and is not owned by, or under the control of Regal Rexnord Corporation:

# DIMENSIONS IN INCHES AND (MILLIMETERS)

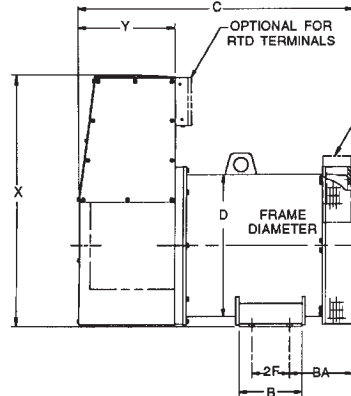
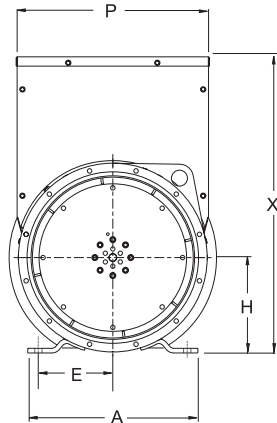


All dimensions are approximate. Contact Regal Rexnord for full dimensional data

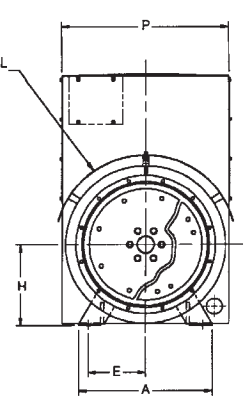
(please see back cover for the contact details).



280-430 frame



570 frame



| Frame size | A              | B              | BA             | C               | C with PMG      | D              | E              | 2F             | H              | P              | X               | Y              | Z            |
|------------|----------------|----------------|----------------|-----------------|-----------------|----------------|----------------|----------------|----------------|----------------|-----------------|----------------|--------------|
| 282        | 14.00<br>(356) | 7.00<br>(178)  | 6.56<br>(167)  | 18.50<br>(470)  | 23.10<br>(587)  | 13.64<br>(346) | 6.25<br>(159)  | 5.00<br>(127)  | 8.00<br>(203)  | 13.55<br>(344) | 18.56<br>(471)  | 8.93<br>(227)  | 3.42<br>(87) |
| 283        | 14.00<br>(356) | 7.00<br>(178)  | 6.56<br>(167)  | 20.50<br>(521)  | 25.10<br>(638)  | 13.64<br>(346) | 6.25<br>(159)  | 5.00<br>(127)  | 8.00<br>(203)  | 13.55<br>(344) | 18.56<br>(471)  | 8.93<br>(227)  | 3.42<br>(87) |
| 284        | 14.00<br>(356) | 7.00<br>(178)  | 6.56<br>(167)  | 22.75<br>(578)  | 27.40<br>(696)  | 13.64<br>(346) | 6.25<br>(159)  | 5.00<br>(127)  | 8.00<br>(203)  | 13.55<br>(344) | 18.56<br>(471)  | 8.93<br>(227)  | 3.42<br>(87) |
| 285        | 14.00<br>(356) | 7.00<br>(178)  | 11.56<br>(294) | 25.00<br>(635)  | 29.60<br>(752)  | 13.64<br>(346) | 6.25<br>(159)  | 5.00<br>(127)  | 8.00<br>(203)  | 13.55<br>(344) | 18.56<br>(471)  | 8.93<br>(227)  | 3.42<br>(87) |
| 361        | 16.00<br>(406) | 9.50<br>(241)  | 7.00<br>(178)  | 24.96<br>(634)  | 27.56<br>(700)  | 17.35<br>(441) | 7.00<br>(178)  | 7.00<br>(178)  | 9.00<br>(229)  | 18.19<br>(462) | 27.85<br>(707)  | 12.44<br>(316) | 3.52<br>(89) |
| 362        | 16.00<br>(406) | 9.50<br>(241)  | 7.00<br>(178)  | 28.59<br>(726)  | 31.18<br>(792)  | 17.35<br>(441) | 7.00<br>(178)  | 7.00<br>(178)  | 9.00<br>(229)  | 18.19<br>(462) | 27.85<br>(707)  | 12.44<br>(316) | 3.52<br>(89) |
| 363        | 16.00<br>(406) | 9.50<br>(241)  | 10.50<br>(267) | 31.72<br>(806)  | 34.29<br>(871)  | 17.35<br>(441) | 7.00<br>(178)  | 7.00<br>(178)  | 9.00<br>(229)  | 18.19<br>(462) | 27.85<br>(707)  | 12.44<br>(316) | 3.52<br>(89) |
| 431        | 21.46<br>(545) | 15.00<br>(381) | 10.00<br>(254) | 33.89<br>(861)  | 38.27<br>(972)  | 22.64<br>(575) | 9.00<br>(229)  | 11.00<br>(279) | 13.00<br>(330) | 24.97<br>(634) | 36.10<br>(917)  | 16.00<br>(406) | 2.66<br>(68) |
| 432        | 21.46<br>(545) | 15.00<br>(381) | 10.00<br>(254) | 37.39<br>(950)  | 41.77<br>(1061) | 22.64<br>(575) | 9.00<br>(229)  | 11.00<br>(279) | 13.00<br>(330) | 24.97<br>(634) | 36.10<br>(917)  | 16.00<br>(406) | 2.66<br>(68) |
| 433        | 21.46<br>(545) | 15.00<br>(381) | 10.00<br>(254) | 42.39<br>(1077) | 46.77<br>(1188) | 22.64<br>(575) | 9.00<br>(229)  | 11.00<br>(279) | 13.00<br>(330) | 24.97<br>(634) | 36.10<br>(917)  | 16.00<br>(406) | 2.66<br>(68) |
| 572RSL     | 22.50<br>(572) | 15.00<br>(381) | 11.50<br>(292) | n/a             | 51.52<br>(1308) | 27.64<br>(702) | 10.00<br>(254) | 11.00<br>(279) | 15.50<br>(394) | 30.77<br>(782) | 42.64<br>(1083) | 17.21<br>(437) | n/a          |
| 573RSL     | 22.50<br>(572) | 24.00<br>(610) | 11.50<br>(292) |                 | 58.02<br>(1474) | 27.64<br>(702) | 10.00<br>(254) | 20.00<br>(508) | 15.50<br>(394) | 30.77<br>(782) | 42.64<br>(1083) | 17.21<br>(437) |              |
| 574RSL     | 22.50<br>(572) | 24.00<br>(610) | 11.50<br>(292) |                 | 65.02<br>(1651) | 27.64<br>(702) | 10.00<br>(254) | 20.00<br>(508) | 15.50<br>(394) | 30.77<br>(782) | 42.64<br>(1083) | 17.21<br>(437) |              |

Must have minimum clearance of 6 inches for air flow in to the generator. Additional clearance may be required for servicing.  
280 - 430 frame sizes equipped with linkboard as standard.

# marathon<sup>®</sup>

---

Generators

*Reliable power ... for the long run*

## Industrial Solutions Regal Rexnord

100 East Randolph Street  
Wausau, WI 54402-80 03  
Phone: 715-675-3359  
Fax: 715-675-8026  
[www.regalrexnord.com](http://www.regalrexnord.com)

The proper selection and application of products and components, including assuring that the product is safe for its intended use, are the responsibility of the customer. To view our Application Considerations, please visit [https://www.regalrexnord.com/  
Application-Considerations](https://www.regalrexnord.com/Application-Considerations)

To view our Standard Terms and Conditions of Sale, please visit [https://www.regalrexnord.com/brands/marathon-generators/  
Terms-and-Conditions-of-Sale](https://www.regalrexnord.com/brands/marathon-generators/Terms-and-Conditions-of-Sale) (which may redirect to other website locations based on product family).

The following trademarks are not owned by, or under the control of Regal Rexnord Corporation: NEMA is a trademark or tradename of National Electrical Manufacturers Association; ABS is a trademark or tradename of ABS Group; Lloyd's Register is a trademark or tradename of Lloyd's Register Group Limited; DNV GL is a trademark or tradename of Det Norske Veritas group.

"Regal Rexnord" is not indicative of legal entity.

Regal Rexnord, DVR, Marathon and MARINER are trademarks of Regal Rexnord Corporation or one of its affiliated companies. ©2020, 2022 Regal Rexnord Corporation. All Rights Reserved.

MCB22034E • Form# SB0239E

 **RegalRexnord**<sup>™</sup>