

# marathon™

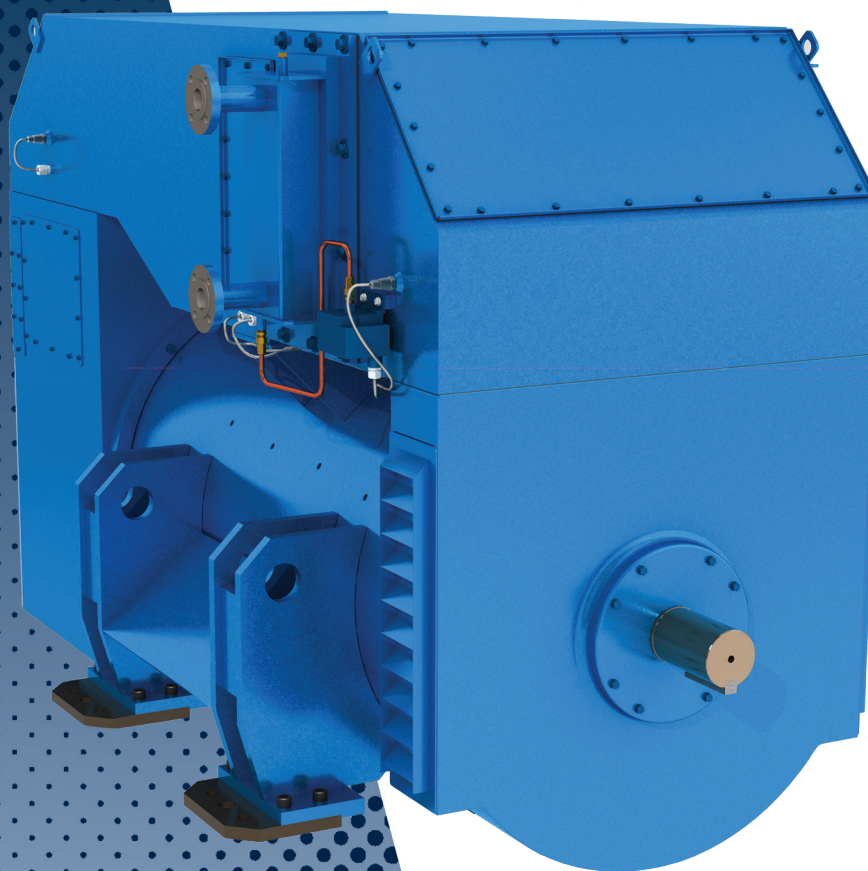
---

## Generators

### **MARINER** DEP/SS

Designed for:

- Marine Diesel Electric Propulsion
- Ship Service Application
- 100% Non-linear Loads
- 450 kW ~ 2500 kW with  
Engine Specific Power Nodes



**MADE IN THE USA**  
ISO 9001:2008 Certified

A Regal Brand

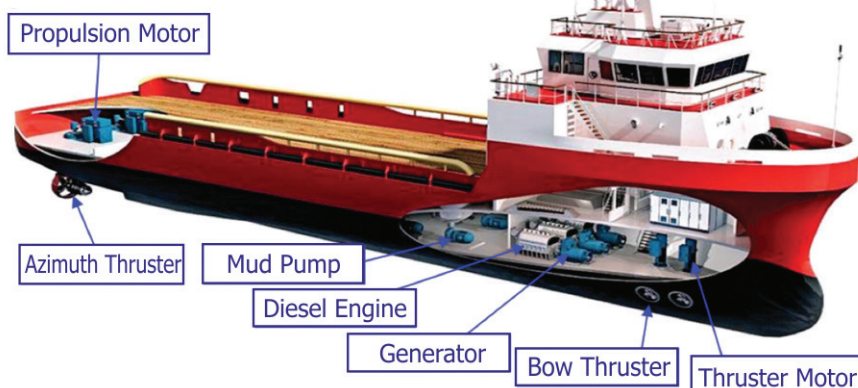
**REGAL**

## Features and Benefits

- Supports SCR and IGBT Propulsion Systems
- Fully Taped, Form Coil, 100% VPI, 4kV, Class H, Non-hygroscopic Insulation System
- Exciter Assembly Over Dimensioned for Durability
- Hardened Steel Surge Ring with Coil Spacers
- Rotor Design Lowers Rotor Temperatures
- Bolt-in, Replaceable Bearing Well
- Subtransient Reactance of 12% - 14%
- Enclosures: IP23 + SOLAS, and IP54 TEWAC
- Design: IMB20 / IM 1101 raised foot
- Shaft end: Cylindrical shaft suitable for mounting customers coupling
- Three differential CT's mounted on Generator Neutral, 5 amp secondary, C100 class
- Oversized Terminal Box
- Space heater single phase, 120 or 240V
- Marathon DVR®2000E+ AVR, 3 phase sensing with Mil RFI Suppression (supplied loose)
- Basler MVC 300 Manual Voltage Control (supplied loose)
- Cross Current CT (supplied loose)
- Stator RTD's, 2 per phase, 100 ohm Platinum
- Bearing RTD's, 1 per bearing, 100 ohm Platinum
- PMG - 300% short circuit Fault Clearing
- Anti-friction Bearings on DE / NDE, Re-greasable, L10 life of 40,000 hrs
- Marine Certification for ABS/Coast Guard, DNV, BV, Lloyds
- IP54 TEWAC features:
  - Double Tube Cooler with Leak Detector for 38°C salt water, with 10°C rise
  - Cooling air RTD, 100 ohm platinum
  - Exhaust air RTD, 100 ohm platinum



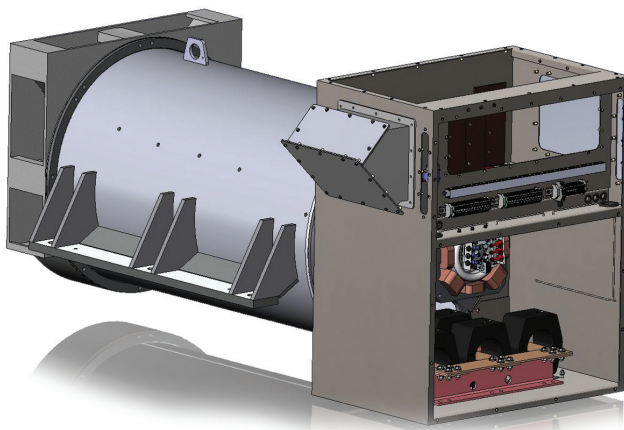
## Diesel Electric Propulsion



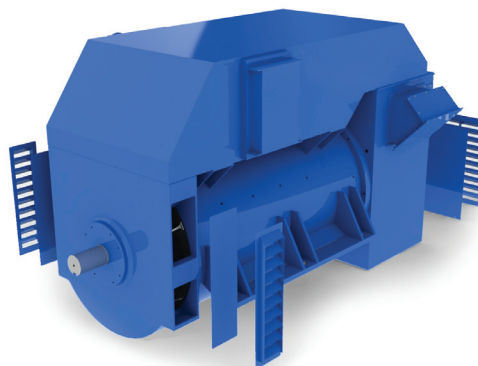
## PSV in Dynamic Positioning



## IP23 Terminal Box



## TEWAC Cooler with Louvers and Blank Plates



**marathon™**  
Generators

100 East Randolph Street  
Wausau, WI 54402-8003  
PH: 715-675-3359  
FAX: 715-675-8026

[www.marathonelectric.com](http://www.marathonelectric.com)

A Regal Brand

**REGAL**

[www.regalbeloit.com](http://www.regalbeloit.com)