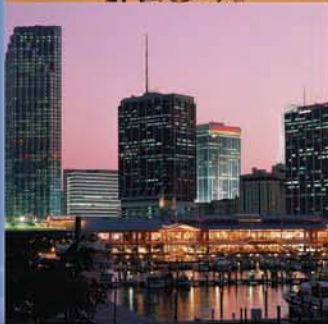
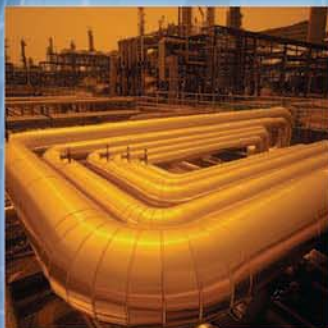


UL Listed

GENERATORS



MAGNA PLUS[®]

*Generator
Ratings:
kW 5 to 2300
(60 Hertz)*



MAGNA MAX DVR[®]

MARATHON ELECTRIC

GENERATORS

A REGAL-BELOIT COMPANY

ISO 9001:2000 Certified



What is UL 2200?

Underwriters Laboratories Standard UL 2200, entitled “Stationary Engine Generator Assemblies” is a standard that applies to the combination of a generator coupled to an internal combustion engine. UL developed the standard to fulfill a need for a third party safety mark for gen-set assemblies. Having the mark on your gen-set can expedite acceptance in areas addressing interconnect requirements or public utilities requiring pre-certified sets. **A UL 2200 set would qualify as a pre-certified set.**

What makes the Marathon Electric approach unique?

In order to fully support our customer base, Marathon has gone beyond the traditional “insulation system only” approach, and has obtained both UL LISTING and UL RECOGNITION. With this extensive library of testing already completed by Marathon, and in UL’s hands, this makes it much easier for our customers to obtain UL Listing of their sets, and will reduce the amount of testing needed to be performed by the Gen-Set Manufacturer. The Marathon UL Listing Card can be viewed on the internet by accessing the UL site www.ul.com, select “Certifications” and enter “E218422” in the box labeled UL File Number. This search brings up four links, select the JZGZ.E218422 link to view Marathon’s UL Listing Card. **The UL LISTING on the Marathon generators applies to all MAGNAPLUS® and MAGNAMAX^{DVR}® products rated 600 Volts and less.**

Who has already obtained UL2200?

The great majority of the “larger” gen-set manufacturers have already obtained UL2200 Listing of their sets. An updated listing can be viewed at the UL web site www.ul.com, select “Certifications” and enter FTSR in the box labeled UL Category Code.

In addition to Marathon already obtaining complete UL 1446 Insulation System Recognition, Marathon also worked with UL to test and verify conformance to the construction and performance requirements of UL 1004b, UL’s Outline of Investigation for Electric Generators, as well as to the applicable requirements of UL 2200. **This includes all of the following as it applies to these UL Standards:**

- Materials
- Frame and Enclosure
- Protection of users (accessibility of uninsulated live parts, film coated wire, moving parts, user servicing, and electric shock)
- Corrosion Protection
- Output Connections
- Wire Bending Space
- Grounding
- Bonding of Internal Parts
- Internal Wiring
- Current Carrying Parts
- Electrical Connections
- Spacings
- Insulation Materials
- Temperature Testing
- Dielectric Voltage - Withstand Test
- Harmonic Distortion Test



FREE! - There is no additional charge for UL marking of Marathon Generators! A cost increase may occur, if by UL temperature limits, it forces selection of a larger unit.

1800 RPM
NEMA Class H Insulation
Shunt (Non-PMG) Excitation SE350 AVR

**Maximum kW Output at
27°C ambient and 130°C R/R
for UL2200 Applications**

**UL2200 Ratings^④
4-Pole**

**60
Hertz**

Standard Models

Base Model	Bolt-on PMG Option Avail.	60 Hz, Three Phase							60 Hz, 1 Phase	
		0.8 PF Lagging							0.8 PF	1.0 PF
		High Wye Connection					Delta	Low Wye	ZigZag	
		480 V	460 V	440 V	416 V	380 V	240 V	208 V	240 V	240 V
281PSL1500	No	6.6	6.7	7	7	7	7	7	3.8	5.8
281PSL1501	No	8.2	8.4	8.7	8.7	8.7	8.7	8.7	4.8	7.2
281CSL1502	No	13	12.5	11.5	11	10	10.5	10.5	7.5	9.5
282PSL1703	②	15	15	15	13.5	12.5	13.5	13.5	8.2	11
282CSL1504	No	18	17.5	17.5	17	15.5	17	17	10	13
282CSL1505	No	24	24	23	22	20	22	22	13	17
283CSL1506	No	28	27	27	26	23	26	26	16	20
283CSL1507	No	33	32	31	30	27	30	30	18	25
284CSL1508	No	40	39	39	38	35	38	38	25	31
284CSL1542	No	43	41	41	40	36	40	40	24	32
361CSL1600①	Yes	48	46	45	42	38	42	42	30	39
361CSL1601①	Yes	60	60	58	55	50	55	55	35	45
361CSL1602①	Yes	70	67	68	65	60	65	65	42	55
362CSL1604①	Yes	90	86	84	80	72	80	80	51	66
362CSL1606①	Yes	105	105	102	100	90	100	100	60	79
363CSL1607①	Yes	135	135	130	125	115	125	125	73	97
431CSL6202①	Yes	155	155	153	151	140	151	151	96	121
431CSL6204①	Yes	181	182	180	176	167	176	176	107	135
431CSL6206①	Yes	215	220	220	210	191	210	210	132	166
431CSL6208①	Yes	230	230	225	225	207	225	225	132	166
432PSL6210	Yes	280	282	283	280	265	280	280	161	201
432PSL6212	Yes	300	300	290	280	265	280	280	161	201
433PSL6216	Yes	380	380	280	375	357	375	375	193	241
433PSL6220	Yes	411	410	410	400	367	400	400	193	241

Alternate Models^③

281PSL1502	No	11	11	11	10.5	10	10.5	10.5	6.3	8.6
282PSL1704	②	16.5	16.5	16	16	14.5	16	16	10	14
282PSL1705	②	21	21	20	20	18	20	20	13	17
283PSL1706	②	27	26	26	25	23	25	25	16	21
283PSL1707	②	33	32	31	30	27	30	30	18	25
284PSL1708	Yes	35	35	35	35	32	35	35	20	30
284PSL1742	Yes	40	40	40	40	37	40	40	25	32
285PSL1700	Yes	45	45	45	45	41	45	45	28	37
286PSL1701	Yes	60	58	56	55	50	55	55	32	42
287PSL1702	Yes	62	61	61	60	55	60	60	36	45

① 361 to 431 PSL models are the alternate to CSL models and have equivalent performance and dimensions.

② PMG Option available as build-up only.

③ Specialty and two bearing orders utilize these windings in place of 280 frame CSL models.

④ This chart depicts a suggested ambient and temperature rise (27°C ambient/130°C rise) that would be in accordance with the UL maximum temperature of 160°C.

Notes A, B, C, D, E, F, and G on page 44 apply to this page.

MAGNAMAX^{DVR}

1800 RPM
NEMA Class H Insulation
DVR®2000E AVR with PMG Excitation

Maximum kW Output at
27°C ambient and 130°C R/R
for UL2200 Applications

UL2200 Ratings³
4-Pole

60
Hertz

Base Model	60 Hz, Three Phase							60 Hz, 1 Phase	
	0.8 PF Lagging							0.8 PF	1.0 PF
	High Wye Connection					Delta	Low Wye	ZigZag	
	480 V	460 V	440 V	416 V	380 V	240 V	208 V	240 V	240 V
431RSL4005	155	153	146	138	122	138	138	88	110
431RSL4007	175	174	168	160	136	160	160	103	129
432RSL4009	215	215	207	200	170	200	200	129	161
432RSL4011	231	235	235	221	190	221	221	127	159
432RSL4013	250	245	240	235	200	235	235	123	154
432RSL4015	285	290	277	262	240	262	262	147	184
432RSL4017	300	291	295	287	255	287	287	158	198
433RSL4019	375	370	360	350	305	350	350	180	225
433RSL4021	405	400	390	380	315	380	380	185	231
570RSL4022 ¹	500	495	490	465	430	N.A.	465	N.A.	N.A.
570RSL4023 ¹	500	495	490	465	430	465	465	209	261
572RSL4024	475	485	465	440	400	N.A.	440	N.A.	N.A.
572RSL4025	475	485	465	440	400	440	440	209	261
572RSL4027	515	515	500	475	405	475	475	227	283
572RSL4028	560	585	560	525	470	N.A.	525	N.A.	N.A.
572RSL4029	560	585	560	525	470	525	525	246	308
572RSL4030	600	610	590	565	485	N.A.	565	N.A.	N.A.
572RSL4031	600	610	590	565	485	565	565	264	330
573RSL4032	700	730	730	700	595	N.A.	700	N.A.	N.A.
573RSL4033	700	730	730	700	595	700	700	308	385
573RSL4034	750	785	765	725	625	725	725	330	413
573RSL4035	750	785	765	725	625	N.A.	725	N.A.	N.A.
574RSL4036	825	845	820	785	670	785	785	363	454
574RSL4037	825	845	820	785	670	N.A.	785	N.A.	N.A.
574RSL4038	920	910	875	835	705	N.A.	N.A.	N.A.	N.A.
575RSL4044	1060	1040	1010	975	830	N.A.	N.A.	N.A.	N.A.
740RSL4045 ²	1100	1070	1030	1000	840	N.A.	1000	N.A.	N.A.
741RSL4045	1100	1070	1030	1000	840	1000	1000	N.A.	N.A.
740RSL4046	1220	1190	1160	1110	945	N.A.	N.A.	N.A.	N.A.
742RSL4048	1300	1290	1240	1180	1030	N.A.	N.A.	N.A.	N.A.
742RSL4049	1300	1290	1240	1180	1030	1180	1180	N.A.	N.A.
742RSL4050	1500	1500	1450	1370	1160	N.A.	N.A.	N.A.	N.A.
743RSL4052	1750	1710	1710	1610	1480	N.A.	N.A.	N.A.	N.A.
744RSL4054	2000	1990	1920	1840	1590	N.A.	N.A.	N.A.	N.A.
744RSL4056	2210	2100	2030	1950	1790	N.A.	N.A.	N.A.	N.A.
744RSL4058	2320	2260	2180	2090	1950	N.A.	N.A.	N.A.	N.A.

¹ Models available approximately 4/1/06, and will replace the 4024 and 4025.

² Model available approximately 1/1/06 and will replace the 741RSL4045.

³ This chart depicts a suggested ambient and temperature rise (27°C ambient/130°C rise) that would be in accordance with the UL maximum temperature of 160°C.

Notes A, B, C, D, E, F, and G on page 44 apply to this page.

**60
Hertz****4 Pole
Dedicated
Single Phase****(4 Leads)****60
Hertz****4 Pole
Dedicated Design
Three Phase****(4 Leads)****Maximum kW Output at 27°C Ambient
and 130°C R/R for UL2200 Applications**

	220 Volt		240 Volt	
	0.8 PF	1.0 PF	0.8 PF	1.0 PF
282PSL1714	8.5	12.0	8.5	13.0
282PSL1715	12	16.5	12	18
282PSL1716	15	20	15	22
283PSL1717	18.5	25	18.5	27
283PSL1718	22	30	22	32
284PSL1750	27	37	27	41
285PSL1711	32	40	32	45
286PSL1712	36	47	36	52
287PSL1713	40	55	40	60
361PSL1611	30	36	30	40
361PSL1612	36	45	36	50
361CSL1613	45	55	47	60
362CSL1615	55	72	59	75
363CSL1617	95	95	66	100
431PSL6222	75	110	73	115
431PSL6224	100	145	100	155
431PSL6226	110	160	110	175
432PSL6228	150	190	155	210

**Maximum kW Output at 27°C Ambient
and 130°C R/R for UL2200 Applications**

	380 Volt		600 Volt	
	431PSL6230	155	284PSL1752	35
431PSL6232	180	361PSL1679	48	
431PSL6234	225	361PSL1633	60	
432PSL6236	290	361PSL1684	70	
433PSL6238	390	362PSL1681	90	
431RSL4152	150	362PSL1680	105	
432RSL4154	200	363PSL1675	135	
432RSL4156	300	431PSL6240	155	
433RSL4158	370	431PSL6242	180	
572RSL4160	450	431PSL6243	230	
572RSL4162	500	432PSL6246	305	
573RSL4164	635	433PSL6248	410	
574RSL4166	830	431RSS4252	150	
572RSL4168	910	431RSS4254	175	
741RSL4170	1085	432RSS4256	210	
742RSL4172	1300	432RSS4258	225	
743RSL4174	1700	432RSS4260	250	
744RSL4176	2000	432RSS4264	300	
		433RSS4266	400	
		572RSS4270	510	
		572RSS4272	600	
		573RSS4274	660	
		573RSS4276	725	
		574RSS4278	825	
		574RSS4280	900	
		741RSS4282	1040	
		741RSS4284	1100	
		742RSS4286	1200	
		743RSS4288	1400	
		743RSS4290	1700	
		744RSS4292	2000	

Some of the basics:

- The standard applies to stationary equipment only.
- Only random wound designs (600 volt and less) are covered.
- Three phase units wired for single phase are covered.
- Dedicated single phase is covered on 280 - 430 frame products.
- The UL maximum total temperature (rise plus ambient) as measured by resistance is limited to 160°C.
- Below is a summary of available rise and ambient combinations for UL2200:

Temp Rise Available	Use with Ambient:	
	@ 27°C	@ 40°C
80	Yes	Yes
105	Yes	Yes
125	Yes	No
130	Yes	No
150	No	No

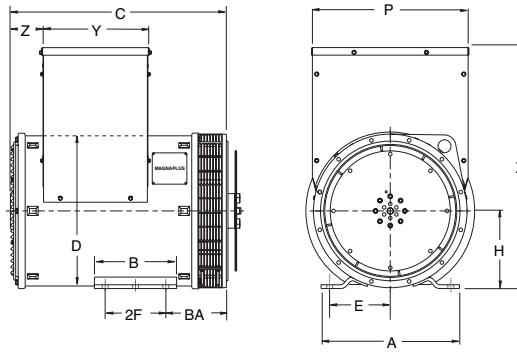
UL LISTING...

...complete units only. Conduit boxes must be installed, the regulator must be mounted and wired, and the nameplate must be complete with the proper model number, insulation and class rating, and total temperature (rise plus ambient), within UL limits.

UL RECOGNIZED...

...units may be provided on those situations where customer purchases units are not fully assembled. For example units purchased without conduit box, or regulator. The nameplate must still be complete with proper model number, insulation class and rating, and total temperature within UL limits.

MAGNAPLUS®



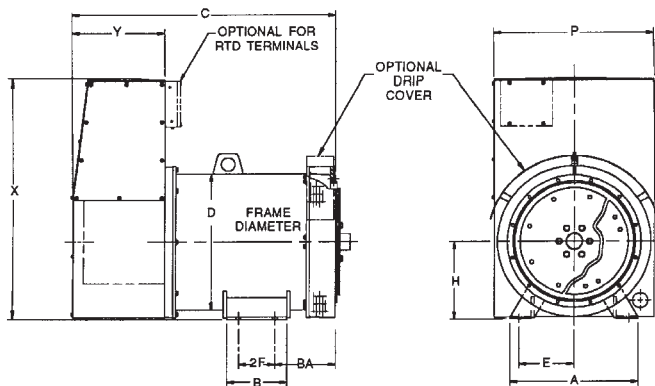
Dimensions in inches

Frame Size	A	B	BA	C	C with PMG	D	E	2F	H	P	X	Y	Z
281PSL	14.00	7.00	6.56	15.95	N/A	13.75	6.25	5.00	8.00	13.55	18.56	6.86	3.50
281CSL	14.00	7.00	6.56	16.34	N/A	13.75	6.25	5.00	8.00	13.55	18.56	6.86	3.50
282PSL	14.00	7.00	6.56	18.50	23.10	13.64	6.25	5.00	8.00	13.55	18.56	8.93	3.42
282CSL	14.00	7.00	6.56	18.35	N/A	13.75	6.25	5.00	8.00	13.55	18.56	8.93	3.42
283PSL	14.00	7.00	6.56	20.50	25.10	13.64	6.25	5.00	8.00	13.55	18.56	8.93	3.42
283CSL	14.00	7.00	6.56	20.83	N/A	13.75	6.25	5.00	8.00	13.55	18.56	8.93	3.42
284PSL	14.00	7.00	6.56	22.75	27.40	13.64	6.25	5.00	8.00	13.55	18.56	8.93	3.42
284CSL	14.00	7.00	6.56	22.83	N/A	13.75	6.25	5.00	8.00	13.55	18.56	8.93	3.42
285PSL	14.00	7.00	11.56	25.00	29.60	13.64	6.25	5.00	8.00	13.55	18.56	8.93	3.42
286PSL	14.00	7.00	11.56	27.00	31.60	13.64	6.25	5.00	8.00	13.55	18.56	8.93	3.42
287PSL	14.00	7.00	11.56	29.00	33.60	13.64	6.25	5.00	8.00	13.55	18.56	8.93	3.42
361	16.00	9.50	7.00	24.96	30.06	17.35	7.00	7.00	9.00	18.19	27.85	12.44	3.52
362	16.00	9.50	7.00	28.59	33.69	17.35	7.00	7.00	9.00	18.19	27.85	12.44	3.52
363	16.00	9.50	10.50	31.72	36.81	17.35	7.00	7.00	9.00	18.19	27.85	12.44	3.52
431	21.46	15.00	10.00	33.89	38.27	22.64	9.00	11.00	13.00	24.97	36.10	16.00	2.66
432	21.46	15.00	10.00	37.39	41.77	22.64	9.00	11.00	13.00	24.97	36.10	16.00	2.66
433	21.46	15.00	10.00	42.39	46.77	22.64	9.00	11.00	13.00	24.97	36.10	16.00	2.66

MAGNAMAX^{DVR}

Dimensions in inches

Frame Size	A	B	BA	C	D	E	2F	H	P	X	Y
431	21.00	10.00	10.00	38.40	22.64	9.00	6.00	13.00	26.51	39.77	15.21
432	21.00	10.00	10.00	43.40	22.64	9.00	6.00	13.00	26.51	39.77	15.21
433	21.00	15.00	10.00	49.40	22.64	9.00	11.00	13.00	26.51	39.77	15.21
570	24.00	15.00	11.50	55.92	22.64	10.00	11.00	15.50	30.77	42.64	17.21
572	22.50	15.00	11.50	51.52	27.64	10.00	11.00	15.50	30.77	42.64	17.21
573	22.50	24.00	11.50	58.02	27.64	10.00	20.00	15.50	30.77	42.64	17.21
574	22.50	24.00	11.50	65.02	27.64	10.00	20.00	15.50	30.77	42.64	17.21
575	22.50	24.00	11.50	69.27	27.64	10.00	20.00	15.50	30.77	42.64	19.21
740	33.00	27.00	12.00	71.37	27.64	15.00	23.00	19.00	30.77	51.45	19.21
741	33.00	27.00	12.00	65.81	34.24	15.00	23.00	19.00	38.02	51.45	21.24
742	33.00	27.00	12.00	72.81	34.24	15.00	23.00	19.00	38.02	51.45	21.24
743	33.00	41.00	12.00	79.31	34.24	15.00	37.00	19.00	38.02	51.45	21.24
744	33.00	41.00	12.00	85.81	34.24	15.00	37.00	19.00	38.02	51.45	21.24



MARATHON ELECTRIC
GENERATORS
A REGAL-BELOIT COMPANY

**Your Independent Power Source
for the 21st Century!**

P.O. Box 8003
Wausau, WI 54402-8003 USA

www.marathonelectric.com

Phone: 715-675-3359
Fax: 715-675-8026

All dimensions are approximate.
Refer to dimension section of the Generator Catalog for full dimensional data.

GPN029 12-05/1000/5013M/RG